



User Guide

Intended Use

The PTS Connect[™] adapter featuring *Bluetooth*[®] technology is intended for use by professional customers. The PTS Connect adapter can be inserted into the MEMo Chip[®] port of a CardioChek[®] PA or CardioChek[®] Plus analyzer and the results can be transferred to a computer. For professional use only.

Compatibility

The PTS Connect adapter is designed to work with Bluetooth-equipped systems running Windows or Android.

Installation of PTS Connect adapter in analyzer / Installation of MEMo Chip

- Ensure the CardioChek analyzer is turned off. If the CardioChek analyzer is on, turn it off by pressing and holding both buttons until the analyzer shuts off.
- The PTS Connect adapter may only be installed into the analyzer's MEMo Chip port. No other accessory (such as a printer cable) should be simultaneously connected to the MEMo Chip port.
- Insert the PTS Connect adapter into the MEMo Chip port with the PTS Connect logo facing towards the front of the analyzer.
- Insert the MEMo Chip into the PTS Connect adapter with the label facing towards the back of the analyzer.

When using the CardioChek PA analyzer with the PTS Connect adapter, the analyzer must be set to PC Output. (Refer to the CardioChek PA user guide for instructions.) No setting changes are required for the CardioChek Plus analyzer.

Pairing

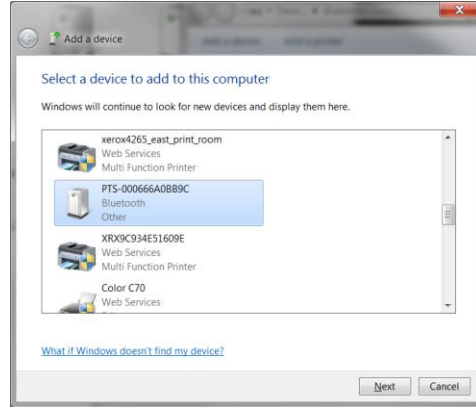
Follow the computer's operating system procedure to pair a device.

1. Insert the device into an analyzer and power-on the analyzer. The device should be discoverable, with a device name of PTS-{Bluetooth ID}. Verify that the ID printed on the top side of the PTS Connect adapter matches the digits after "PTS-" in name of the device discovered by the computer.
2. Only pair one PTS Connect adapter to one PC or Android device at a time. Pairing the PTS Connect adapter with multiple devices introduces a risk that test results could be mistakenly sent to the wrong device.
3. When prompted by the operating system for a PIN number, enter the number printed on the bottom side of the PTS Connect adapter.
4. If the PIN number has been entered correctly, the computer will successfully pair with the PTS Connect adapter.
5. Run a sample test or send a result from the analyzer memory to the data capture application. (See the CardioChek analyzer user guide for running a test or sending results from memory.)

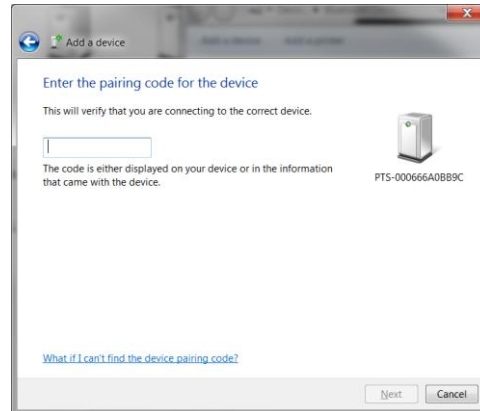


Examples

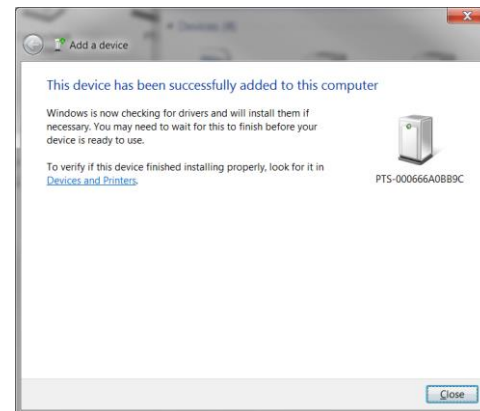
1. Sample Discovery window in "Add a device" in the Microsoft® Windows 7 operating system. Other operating systems may have a different appearance.



2. Enter the PIN code window



3. Success window





Un-pairing

Follow the computer's operating system's procedure to un-pair the PTS Connect adapter.

Auto-connect

The auto-connect feature allows automatic reestablishment of a connection when the analyzer is turned off and on while a connection is established.

Microsoft Windows Operating Systems

The PTS Connect adapter typically appears as two separate COM ports, one incoming and one outgoing. The PC's incoming and outgoing COM ports can be seen in the PC's Bluetooth Settings. The outgoing COM port must be opened once to establish a connection. Subsequent connections may use the incoming port, which supports auto-connect functionality.

1. Pair the adapter as described above.
2. Without turning off the analyzer, make a connection from the PC's outgoing COM port (typically the lowest assigned COM port for the device). If the analyzer is turned off or times out before the connection is made, the auto-connect feature will not work and the PTS Connect adapter must be unpaired and pairing process re-started. Right click on the Bluetooth icon and right click on Bluetooth settings and select COM Port tab. Look for the PTS-{Bluetooth ID} address label.
3. Open the incoming COM port.
4. Connection with this port will now be re-established automatically any time the incoming port is opened and the PTS Connect adapter is powered.

Android Operating System

1. Pair the adapter per operating system instructions.
2. Without turning off the analyzer, make a connection with the PTS Connect adapter with an Android App. If the analyzer is turned off or times out before the connection is made, the auto-connect feature will not work and the PTS Connect adapter must be unpaired and pairing process re-started.
3. Connection with this port will now be re-established automatically any time the port is opened and the PTS Connect adapter is powered.

Troubleshooting

The PTS Connect adapter cannot be discovered

- Ensure the adapter is properly plugged into the analyzer.
- Ensure the analyzer is powered on.
- Ensure the adapter is within 3 meters of the computer.
- Ensure that at least 60 seconds have elapsed between powering on the analyzer and attempting to pair the adapter.
- Ensure that any Bluetooth filtering in the computer's application is disabled so that all devices may be seen.



The PTS Connect adapter cannot pair to the computer

- Ensure the adapter is within 3 unobstructed meters of the computer.
- Ensure the PIN code is entered correctly. The PIN code is printed on a label on the bottom of the PTS Connect adapter.
- Ensure that any letters used in the PIN code are capitalized.
- Ensure that the computer has a supported operating system.

Note: Only Microsoft Windows and Android operating systems are supported.

Test results are not received by the computer after a test run

- Ensure the PTS Connect adapter is properly paired with the computer.
- Ensure the computer's application is connected to the PTS Connect adapter with the correct COM port.
- Ensure the computer's application is set to 9600 BAUD, 8 data bits, No Parity and 1 stop bit.
- Ensure the PTS Connect adapter is seated in the analyzer properly.
- If using the CardioChek PA analyzer, ensure that the OUTPUT SELECT in the PRINT menu under SETTINGS menu is set to PC.
- Ensure that another PC is not connected to this PTS Connect adapter.

Analyzer states INSTALL MEMO CHIP

- Ensure the MEMo Chip is installed on top of the PTS Connect adapter.
- Ensure the PTS Connect adapter is seated in the analyzer properly.

The PTS Connect adapter or MEMo Chip does not insert

- Ensure they are oriented properly.

Note: The PTS Connect adapter should be inserted into the MEMo Chip port with the PTS Connect adapter logo label facing up and the MEMo Chip lot number label facing down.

The PTS Connect adapter does not auto-connect with the computer after power cycling the analyzer

- Ensure that the PTS Connect adapter was previously paired to the computer and the computer's application had connected with the adapter.
- Un-pair the PTS Connect adapter and pair and connect again to the computer and computer's application.

Test results are not complete or do not seem correct

- The analyzer is outside of the 3 meter transmitting range of the PTS Connect adapter. Move the analyzer closer to the computer.
- Re-transmit the results from the analyzer.

How to Send Result From Memory

1. Navigate to the stored result to be sent according to the analyzer's instructions for use.
2. Press Enter to send the result.



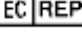









Range

The adapter can be discovered, paired and connected up to 3 meters.

Environmental

- Storage conditions
64 – 95 °F (18 – 35 °C)
- Optimal Operating Conditions
68 – 80 °F (20 – 27 °C)
- Humidity Range:
20 to 80% RH

EXPLANATION OF SYMBOLS	
	CATALOG NUMBER
	CONSULT INSTRUCTIONS FOR USE
	AUTHORIZED REPRESENTATIVE IN THE EUROPEAN COMMUNITY
	BATCH CODE
	MANUFACTURER
	TEMPERATURE LIMITATION
	HUMIDITY LIMITATION
	KEEP DRY
	THIS PRODUCT FULFILLS THE REQUIREMENTS OF EUROPEAN DIRECTIVE 98/79/EC FOR IN VITRO DIAGNOSTIC MEDICAL DEVICES
	PRODUCT REQUIRES SEPARATE COLLECTION FOR ELECTRICAL AND ELECTRONIC EQUIPMENTS PER THE WEEE DIRECTIVE



PTS Connect, CardioChek, and MEMo Chip are trademarks of Polymer Technology Systems, Inc. Other trademarks and trade names are those of their respective owners.

The Bluetooth® word mark and logos are registered trademarks owned by Bluetooth SIG, Inc. and any use of such marks by PTS Diagnostics is under license.



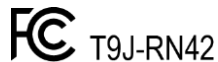
Polymer Technology Systems, Inc.
7736 Zionsville Road
Indianapolis, IN 46268 USA

For assistance with the PTS Connect™ adapter

Call PTS Diagnostics Customer Service:
1-877-870-5610 (Toll-free in the US)
+1-317-870-5610 (Direct) +1-317-870-5608 (Fax)
E-mail: inforequest@ptsdiagnostics.com

Website: www.ptsdiagnostics.com

PS-600428 EN Rev. 1 4/2016



EC REP

MDSS GmbH
Schiffgraben 41
30175 Hannover, Germany